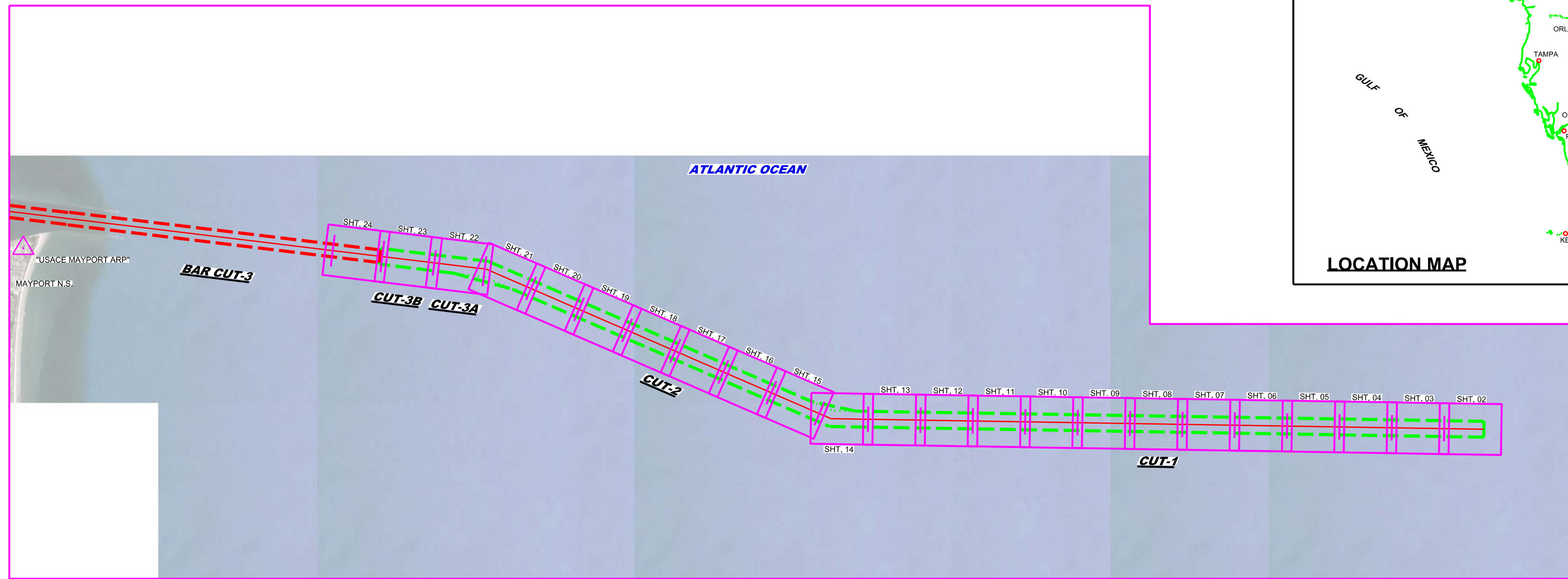
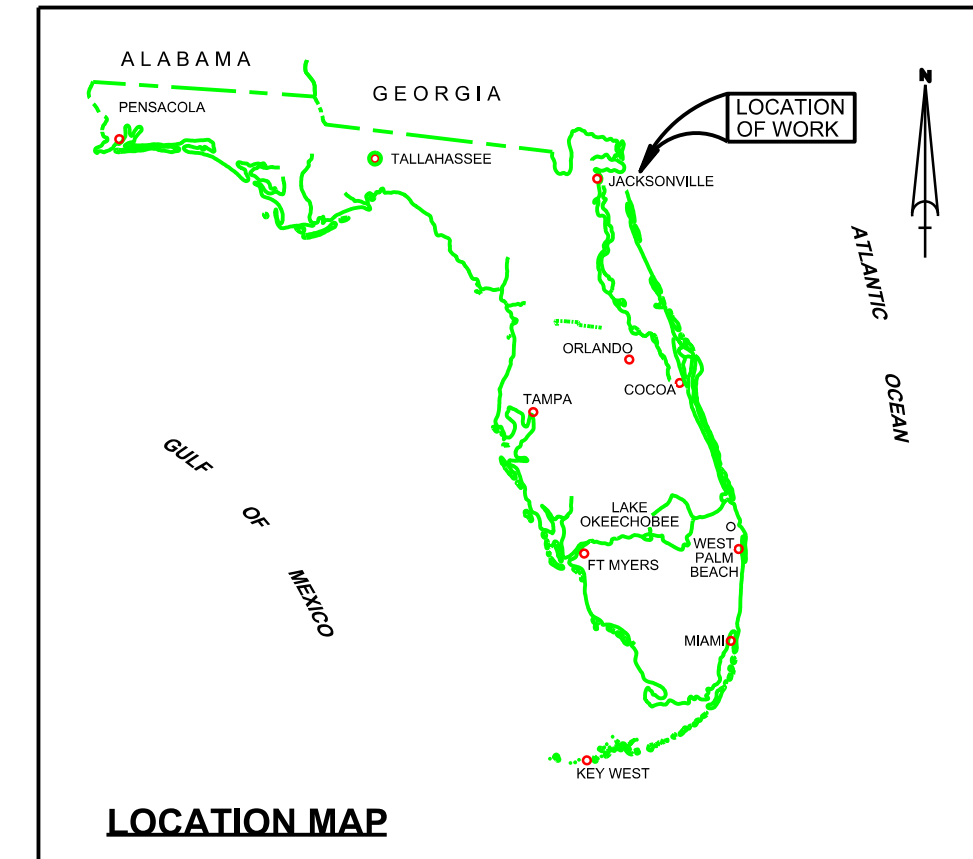



JACKSONVILLE HARBOR, FLORIDA OUTER EXTENSION SURVEY FY22 50-FOOT PROJECT




 US Army Corps of Engineers
 Jacksonville District
 SAFETY ON THIS JOB
 DEPENDS ON YOU

DEPARTMENT OF THE ARMY
 JACKSONVILLE DISTRICT, CORPS OF ENGINEERS
 JACKSONVILLE, FLORIDA










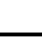
Checked by: GMR
 Designed by: WRM
 Drawn by: WRM
 File Name: JAX HARBOR 47 EXTENSION-CA16ACCE.DGN
 Date: MAY 2022

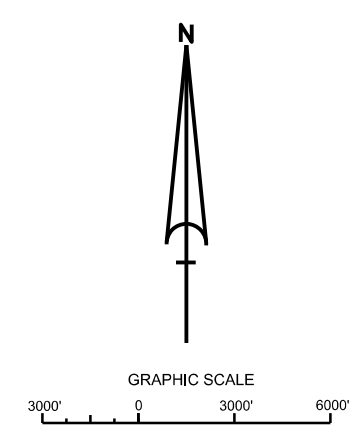
JACKSONVILLE HARBOR, FLORIDA
**HYDROGRAPHIC EXAM SURVEY FY22
OUTER CHANNEL EXTENSION**
 INDEX, LOCATION AND VICINITY MAP

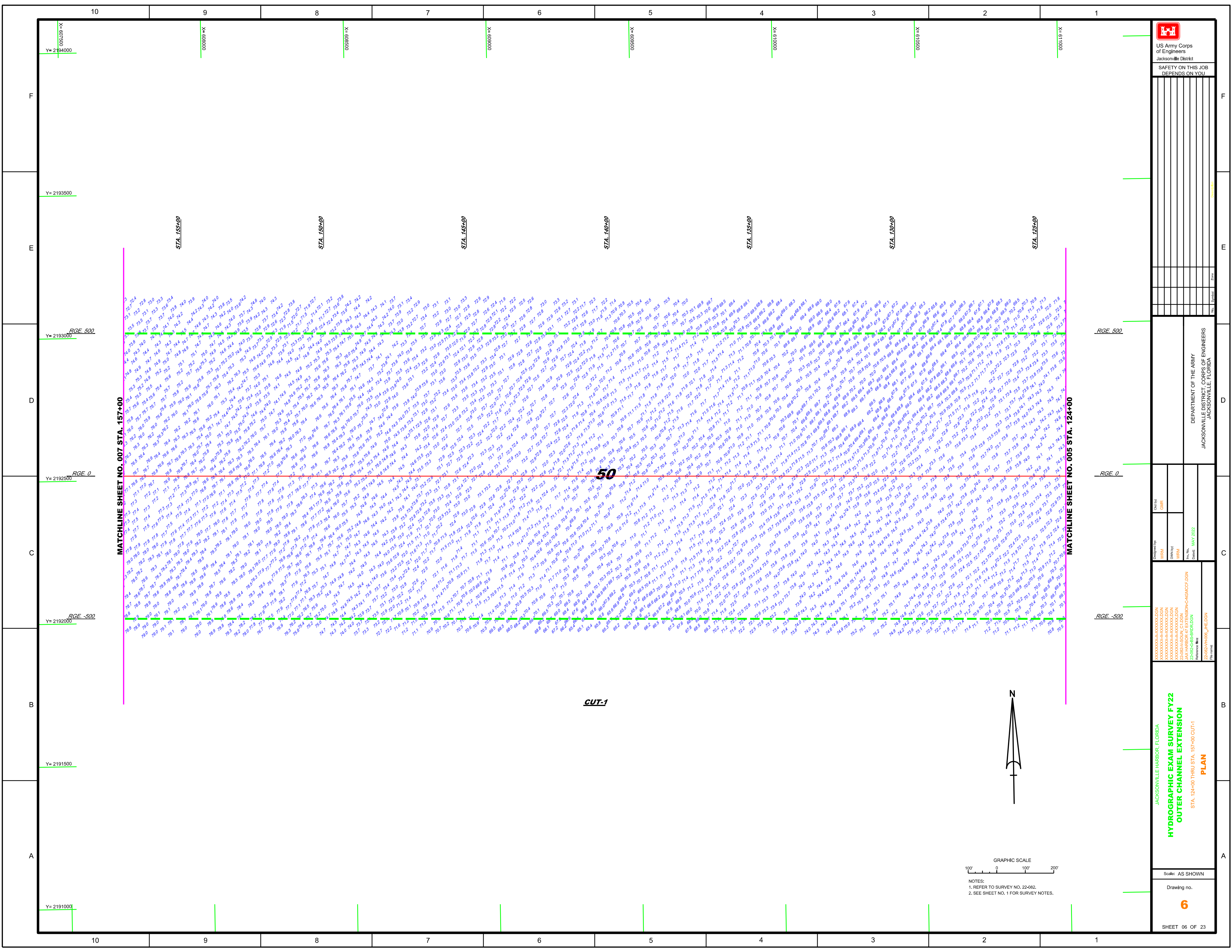
Scale: AS SHOWN
 Drawing no. **1**
 SHEET 01 OF 24


SURVEY NOTES:

- REFER TO SURVEY NO. 22-082.
- TIDAL REDUCTIONS WERE OBTAINED UTILIZING REAL-TIME KINEMATIC (RTK) GPS AND REFERENCED TO MLLW USING A HYPACK KINEMATIC TIDAL DATUM (KTD) FILE. FILE NAME:
CAMDENGA-NASSAU-DUVAL-STJOHNS-FLAGLER,20191202.KTD
- ALL ELEVATIONS ARE BELOW THE CHART DATUM UNLESS PRECEDED BY A (+) SIGN.
- PLANE COORDINATES ARE BASED ON THE TRANSVERSE MERCATOR PROJECTION FOR THE EAST ZONE OF FLORIDA AND REFERENCED TO THE NORTH AMERICAN DATUM OF 1983 (NAD83).
- ALL STATIONING REFERS TO THE CENTERLINE OF THE CHANNEL.
- THIS SURVEY WAS PERFORMED USING REAL-TIME KINEMATIC (RTK) GPS POSITIONING WITH THE FOLLOWING REFERENCE BASE LOCATIONS:
REFERENCE BASE LOCATED AT "USACE MAYPORT ARP" (OPUS PID: BBG280)
TIDE STAFF LOCATED AT MORNING STAR MARINA (872 0218 TIDAL A)
- DEPTHS DEPICTED BY THIS SURVEY ARE IN FEET AND TENTHS AND REFERENCED TO MEAN LOWER LOW WATER (MLLW), TIDAL EPOCH 1983-2001, AS REPORTED BY THE NATIONAL OCEANIC AND ATMOSPHERIC ADMINISTRATION (NOAA). NOAA'S DATUM MODEL WAS USED AND CALIBRATED TO THE PUBLISHED MLLW HEIGHT OF THE BENCHMARK ASSOCIATED WITH THE TIDE GAGE SITE SPECIFIED BELOW:
NOAA TIDAL STATION 872-0218, BAR PILOTS DOCK
- VERTICAL MEASUREMENTS WERE MADE USING A R2 SONIC MODEL 2024 MULTI-BEAM SYSTEM OPERATING AT 240 KHZ. ALL SOUNDINGS SHOWN IN HIGH FREQUENCY.
- VESEL: SV SALZER DATE OF SURVEY: 02-05 MAY 2022 AREA SURVEYED: JAX HARBOR OUTER EXTENSION
- AIDS TO NAVIGATION WERE NOT LOCATED FOR THIS SURVEY.
- THE INFORMATION DEPICTED ON THIS MAP REPRESENTS THE RESULTS OF SURVEYS MADE ON THE DATES INDICATED ABOVE AND CAN ONLY BE CONSIDERED AS INDICATING THE GENERAL CONDITIONS AT THAT TIME. THIS CHART IS SOLELY FOR THE DISTRIBUTION OF AVAILABLE DEPTHS AT THE TIME OF SURVEY.
- SURVEY ACCURACY STANDARDS, QUALITY CONTROL, AND QUALITY ASSURANCE REQUIREMENTS WERE FOLLOWED DURING THIS SURVEY IN ACCORDANCE WITH USACE EM 1110-2-1003, HYDROGRAPHIC SURVEYING, 30 NOV 2013 AND EM 1110-2-6056, STANDARDS AND PROCEDURES FOR REFERENCING PROJECT ELEVATION GRADES TO NATIONWIDE VERTICAL DATUMS, 30 NOV 2013.

LEGEND	
	MONUMENT
	LIGHTED BEACON
	GREEN DAYBEACON
	RED DAYBEACON
	RED LIGHTED BUOY
	GREEN LIGHTED BUOY
	CAN BUOY
	NUN BUOY
	TIDE STAFF
	PROJECT DEPTH







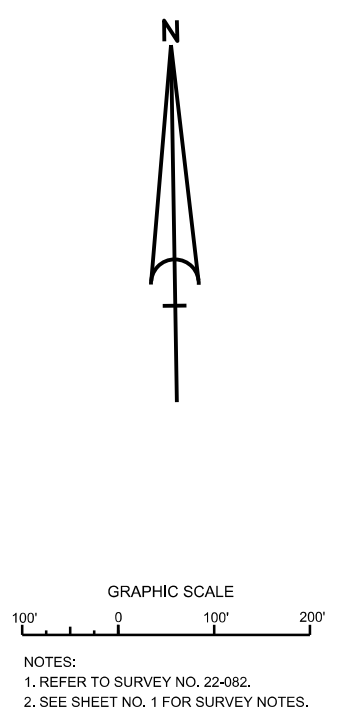
 US Army Corps of Engineers
 Jacksonville District
 SAFETY ON THIS JOB
 DEPENDS ON YOU

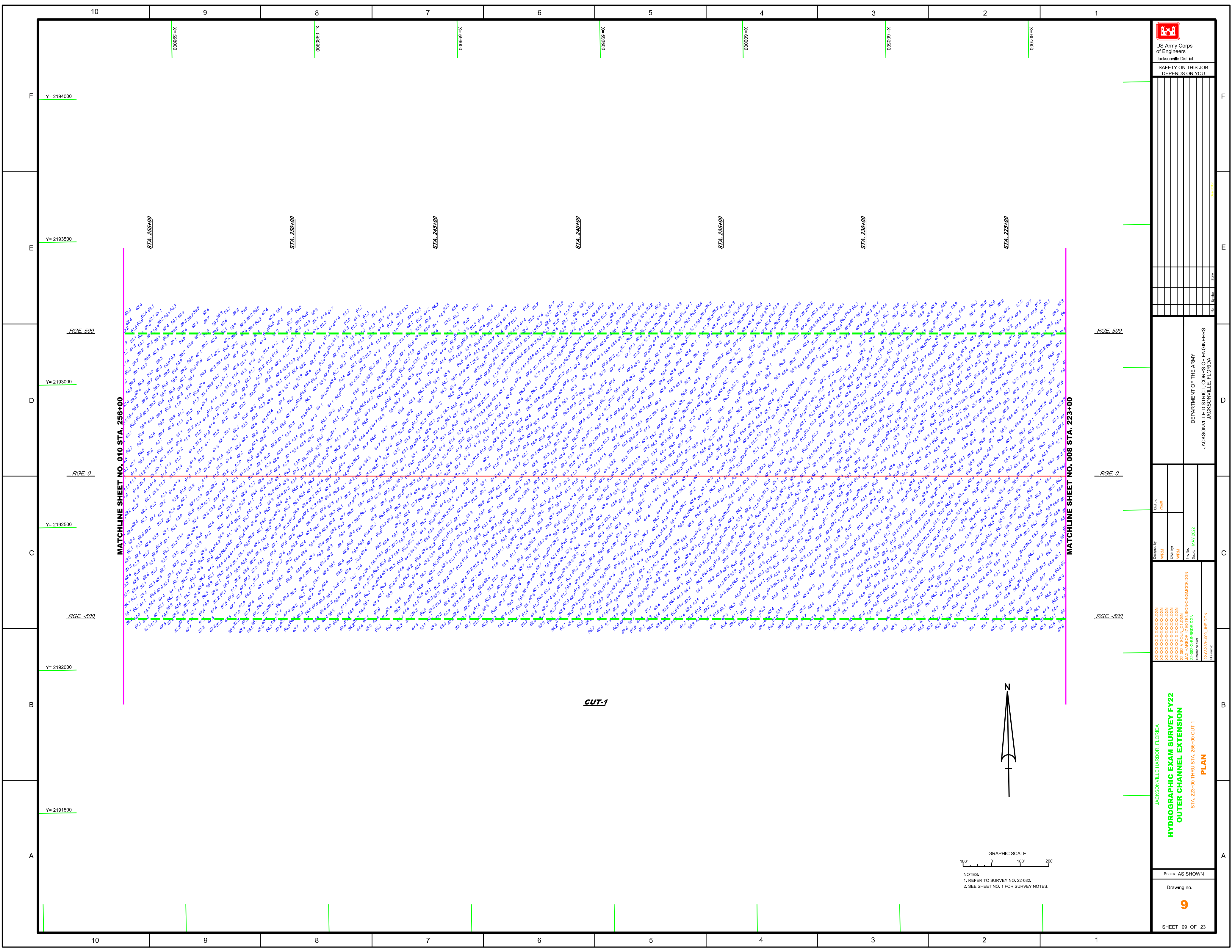
DEPARTMENT OF THE ARMY
 JACKSONVILLE DISTRICT, CORPS OF ENGINEERS
 JACKSONVILLE, FLORIDA


Designated By: **WRM**
 Drawn By: **WRM**
 Check By: **GHR**
 Date: **MAY 2022**

JACKSONVILLE HARBOR, FLORIDA
HYDROGRAPHIC EXAM SURVEY FY22
OUTER CHANNEL EXTENSION
 STA. 124+00 THRU STA. 157+00 CUT-1
PLAN

Scale: AS SHOWN
 Drawing no. **6**
 SHEET 06 OF 23





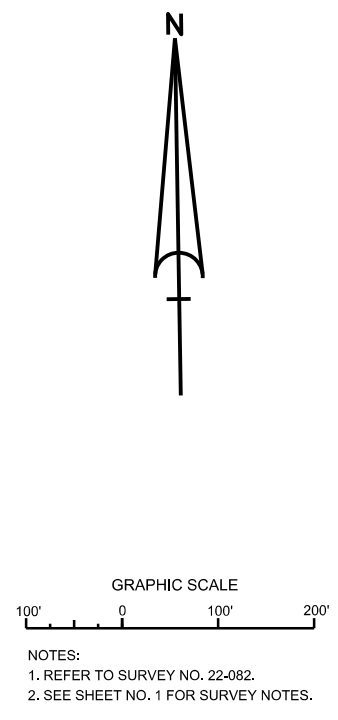


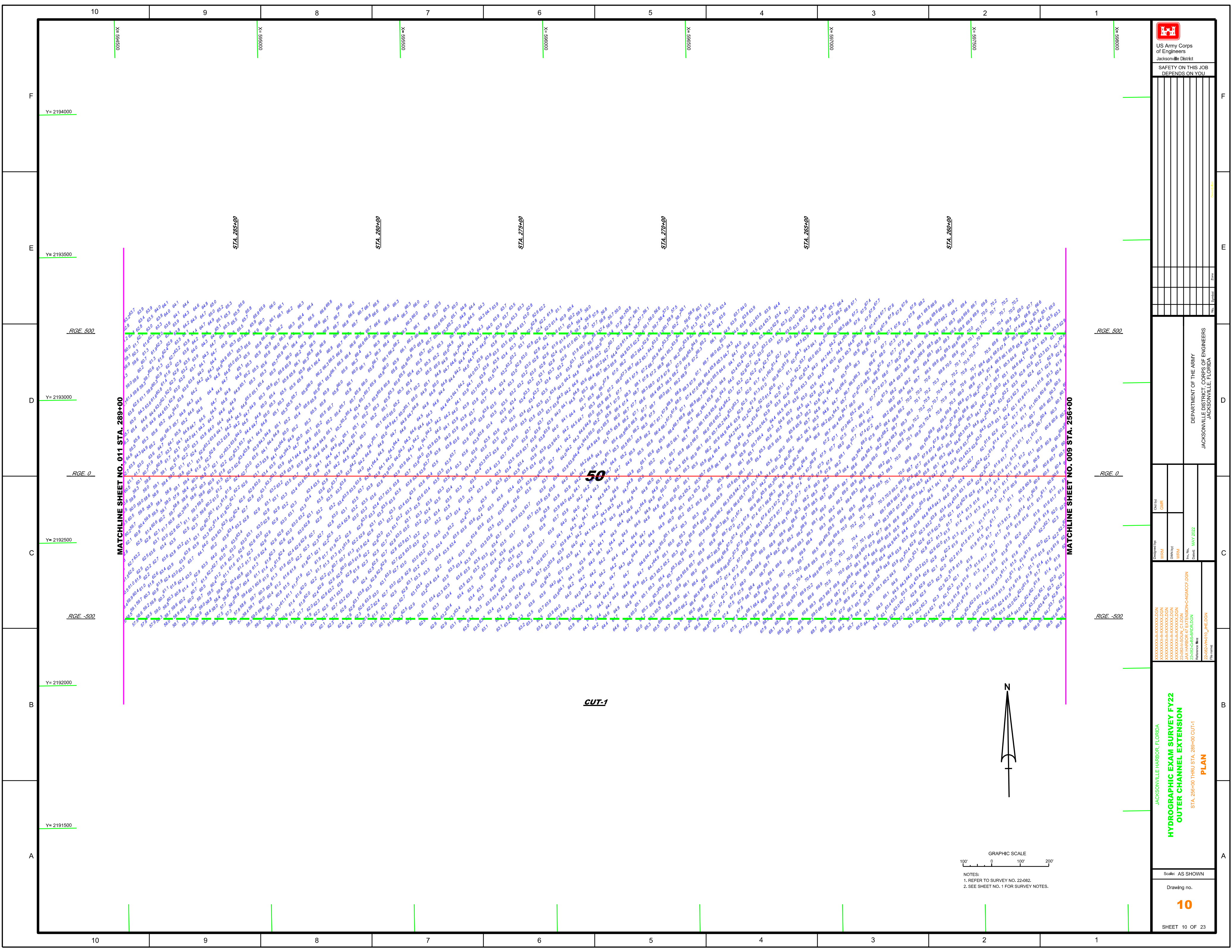
 US Army Corps of Engineers
 Jacksonville District
 SAFETY ON THIS JOB
 DEPENDS ON YOU


DEPARTMENT OF THE ARMY
 JACKSONVILLE DISTRICT, CORPS OF ENGINEERS
 JACKSONVILLE, FLORIDA

Designated By: **WRM**
 Checked By: **GHR**
 Drawn By: **WRM**
 Date: **MAY 2022**
 Project: **JAX HARBOR 67 EXTENSION-CAUGACE-DGN**
 Reference File: **Z:\JAX-HARBOR_67_EXT-DGN**

JACKSONVILLE HARBOR, FLORIDA
HYDROGRAPHIC EXAM SURVEY FY22
OUTER CHANNEL EXTENSION
 STA. 223+00 THRU STA. 256+00 CUT-1
PLAN
 Scale: AS SHOWN
 Drawing no. **9**
 SHEET 09 OF 23





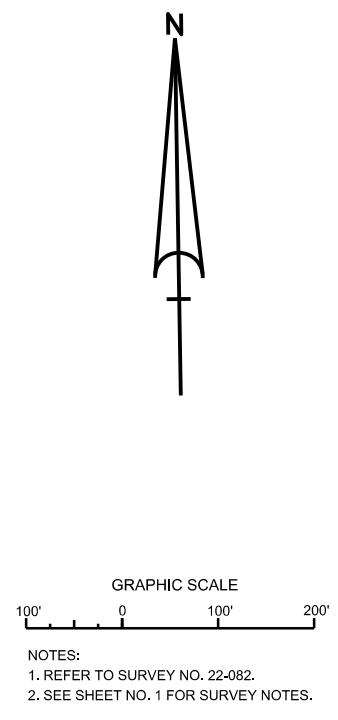


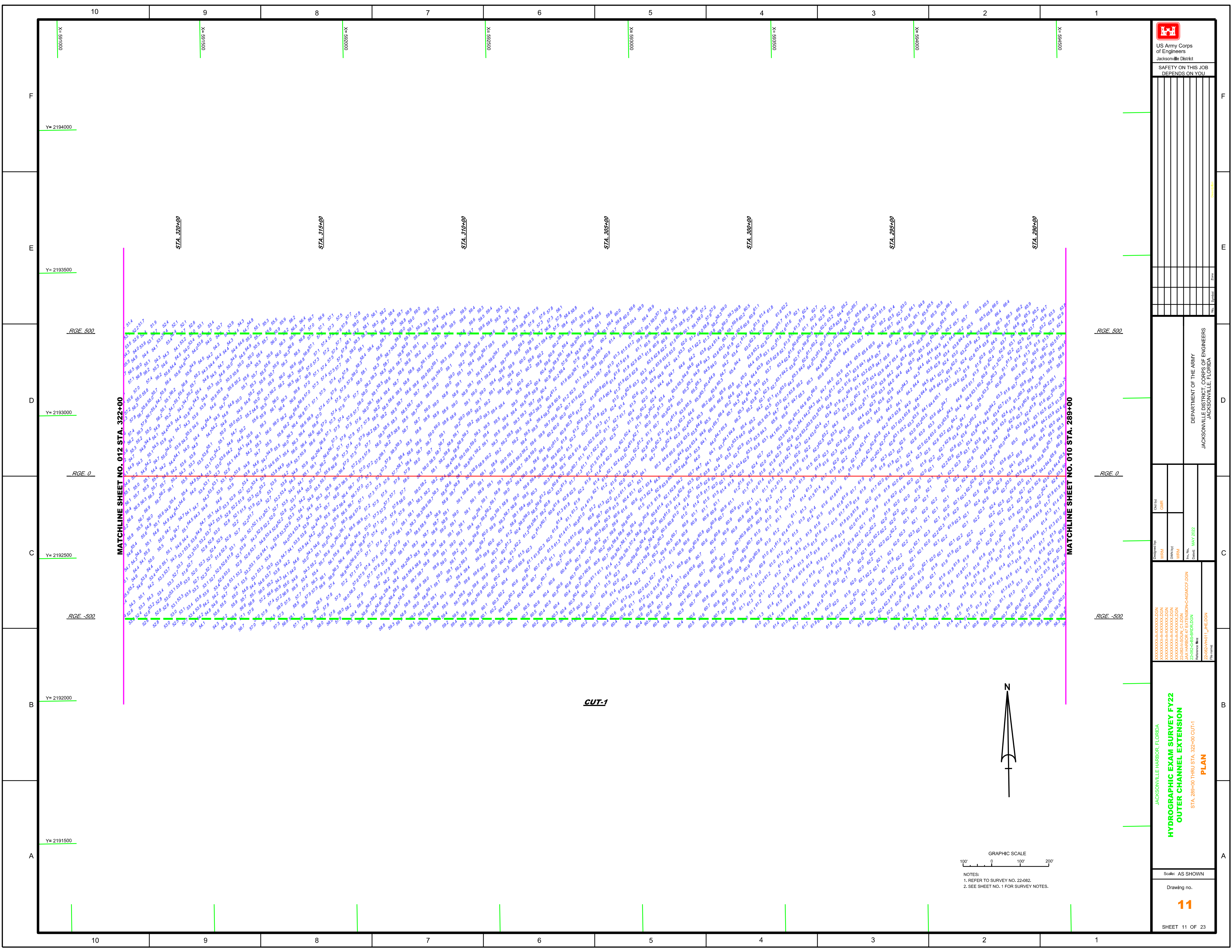
 US Army Corps of Engineers
 Jacksonville District
 SAFETY ON THIS JOB
 DEPENDS ON YOU


DEPARTMENT OF THE ARMY
 JACKSONVILLE DISTRICT, CORPS OF ENGINEERS
 JACKSONVILLE, FLORIDA

Designated By: **WRM**
 Checked By: **GHR**
 Drawn By: **WRM**
 Date: **MAY 2022**
 Project: **JAX HARBOR 67 EXTENSION-CAIGACC-DGN**
 Reference File: **Z:\CAIGACC-BS-IRBOLDN**
 File Name: **Z:\CAIGACC\H01\JHE.DGN**

JACKSONVILLE HARBOR, FLORIDA
HYDROGRAPHIC EXAM SURVEY FY22
OUTER CHANNEL EXTENSION
 STA. 256+00 THRU STA. 289+00 CUT-1
PLAN
 Scale: AS SHOWN
 Drawing no. **10**
 SHEET 10 OF 23





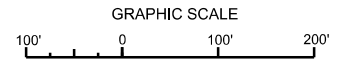
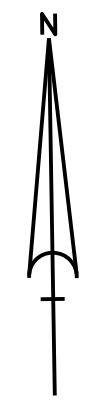

 US Army Corps of Engineers
 Jacksonville District
 SAFETY ON THIS JOB
 DEPENDS ON YOU

DEPARTMENT OF THE ARMY
 JACKSONVILLE DISTRICT, CORPS OF ENGINEERS
 JACKSONVILLE, FLORIDA

Designated By: **WRM**
 Drawn By: **WRM**
 Check By: **GHR**
 Date: **MAY 2022**

JACKSONVILLE HARBOR, FLORIDA
HYDROGRAPHIC EXAM SURVEY FY22
OUTER CHANNEL EXTENSION
 STA. 289+00 THRU STA. 322+00 CUT-1
PLAN

Scale: AS SHOWN
 Drawing no. **11**
 SHEET 11 OF 23



NOTES:
 1. REFER TO SURVEY NO. 22-082.
 2. SEE SHEET NO. 1 FOR SURVEY NOTES.

